

# BIOREGIO Carpathians

**Kick-Off-Meeting**  
**Zarnesti, 27.-29. July 2011**



Jointly for our common future

## **ERDF PP5 European Academy Bolzano (EURAC) – Institute for Regional Development and Location Management**

- Private research institute founded in 1992
- 11 institutes with 285 collaborators
- 48% basic financing from the province,  
52% funds from Third Parties (tot.: 16 Mio. €)
- Actually involved in 44 EU projects
- 60% female
- Average age 35 years



Jointly for our common future

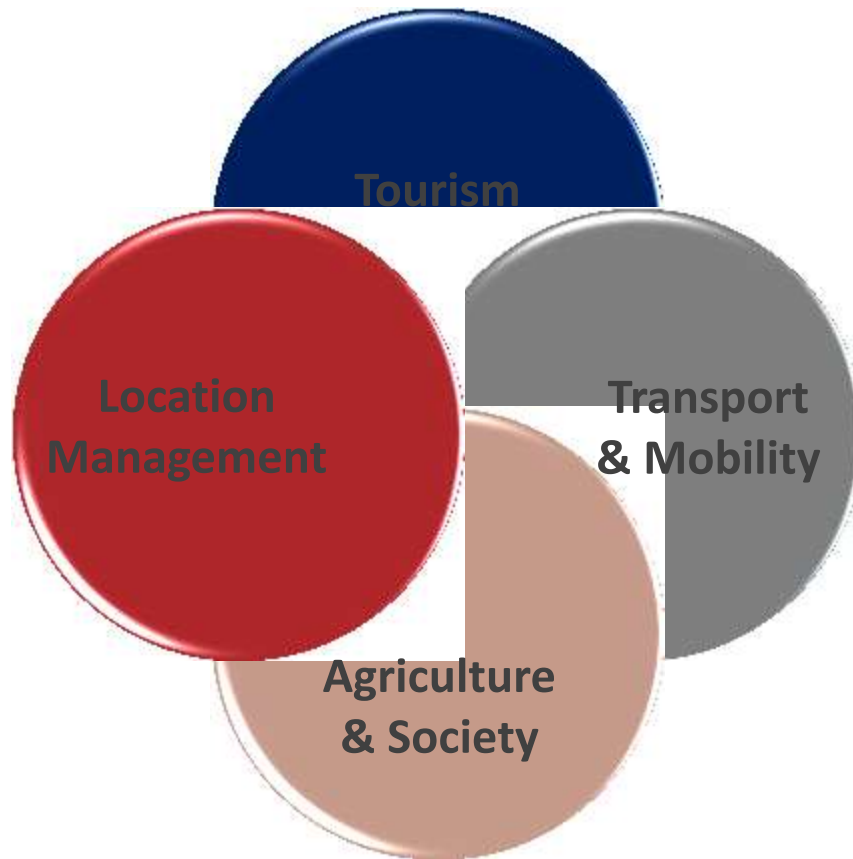
## **ERDF PP5 European Academy Bolzano (EURAC) – Institute for Regional Development and Location Management**

- Interdisciplinary approach
- Actual EU projects:  
Access2Mountain, Econnect, ClimAlpTour,  
Clisp, Comunis, iMONITRAF!, InterregioRail,  
SEETAC, Transitects
- 20 collaborators from various disciplines



Jointly for our common future

## Main fields of research & competences



➔ Mountain Regions and sustainability as common framework for all thematic areas

➔ Special focus on intersections

➔ Scientific questions with strong focus on significance for practice

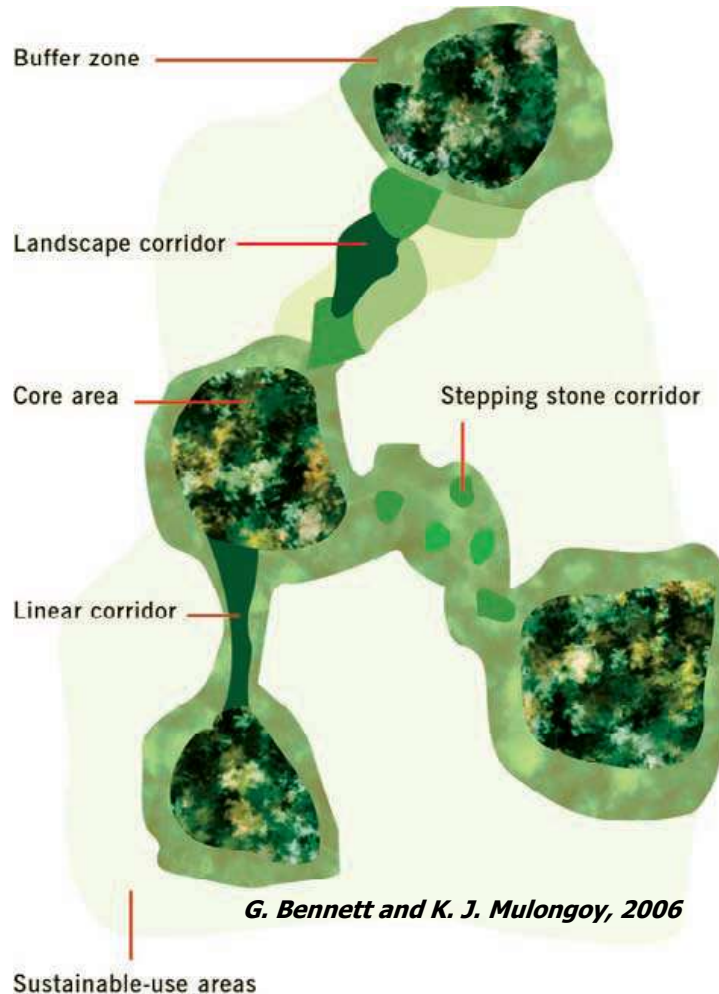
➔ EURAC-activities combined with PhD-studies

Jointly for our common future

## WP5 „Connectivity and Continuity“

- What for are we doing BIOREGIO?
  - Enhancing the **ECOLOGICAL NETWORK**
    - ➔ **Species**
    - ➔ **Population**
    - ➔ **Habitats**
  - Expected Objective?
  - Which methodological approach brings us closer to that goals?
- Problems & Requirements
  - Study Area - Scale
  - Definition of connectivity – “motorways for umbrella species”
  - Terrestrial and/or aquatic environment
  - Vulnerability towards fragmentation
  - Data availability
  - Barriers & threats
  - Awareness among social groups
  - Concepts and tools to fit corridors into current land use systems
  - Funding

## Ecological Network





## The ECONNECT Project (2009 - 2011)

**Vision: to maintain a continuum consisting of interconnected habitats in the Alps**

- Analysis of habitats and corridors on Alpine-wide scale for selected key species: lynx, wolf, brown bear, red deer, black grouse and griffon vulture and aquatic analysis
- Analysis of legal barriers a. cross-border coop. possibilities
- Implementation of measures in Pilot Regions:
  - Concrete planning of links on local scale
  - Stakeholder involvement
  - Training sessions, meetings, workshops

## Tasks in WP5

1. Collection of natural, social and economic data related to experience of ECONNECT
2. Carpathian-wide harmonisation of collected data
3. Development of a web-GIS
4. Recommendations: reducing barriers and bringing the Natura 2000 network forward
5. Workshops with regional experts and stakeholders
6. Legal barriers in the Carpathians and in Pilot Areas



# BIOREGIO Carpathians

## 1. Data collection

### Data basis

- Aerial Photography
- Satellite Imagery
- DEM

### Land cover information

- Corine landcover data
- Land use planning zones
- Morphology of water features
- Near-water vegetation
- Floodplain Forests (“Augebiete” in German)

### Barriers

- Boundaries Protected Areas
- Motorways
- Highways
- (Primary Roads)
- County Roads
- (Secondary Roads)
- Forest Tracks
- Railways
- Bridges
- Ski Infrastructure
- Rivers
- Water Bodies
- Dams/Weirs
- Overhead Power lines

➔ **Species and habitats**

➔ **WP3: Database (PP10)**

Jointly for our common future

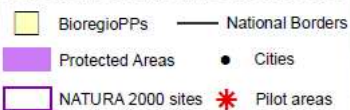
## Questionnaire for each Pilot area

(Duna Ipoly National Park, Iron Gates Nature Park/Djerdap National Park, Maramures Nature Park/Carpathian Biosphere Reserve)

- Data availability?
- Data ownership?
- Metadata?
- Additional data?

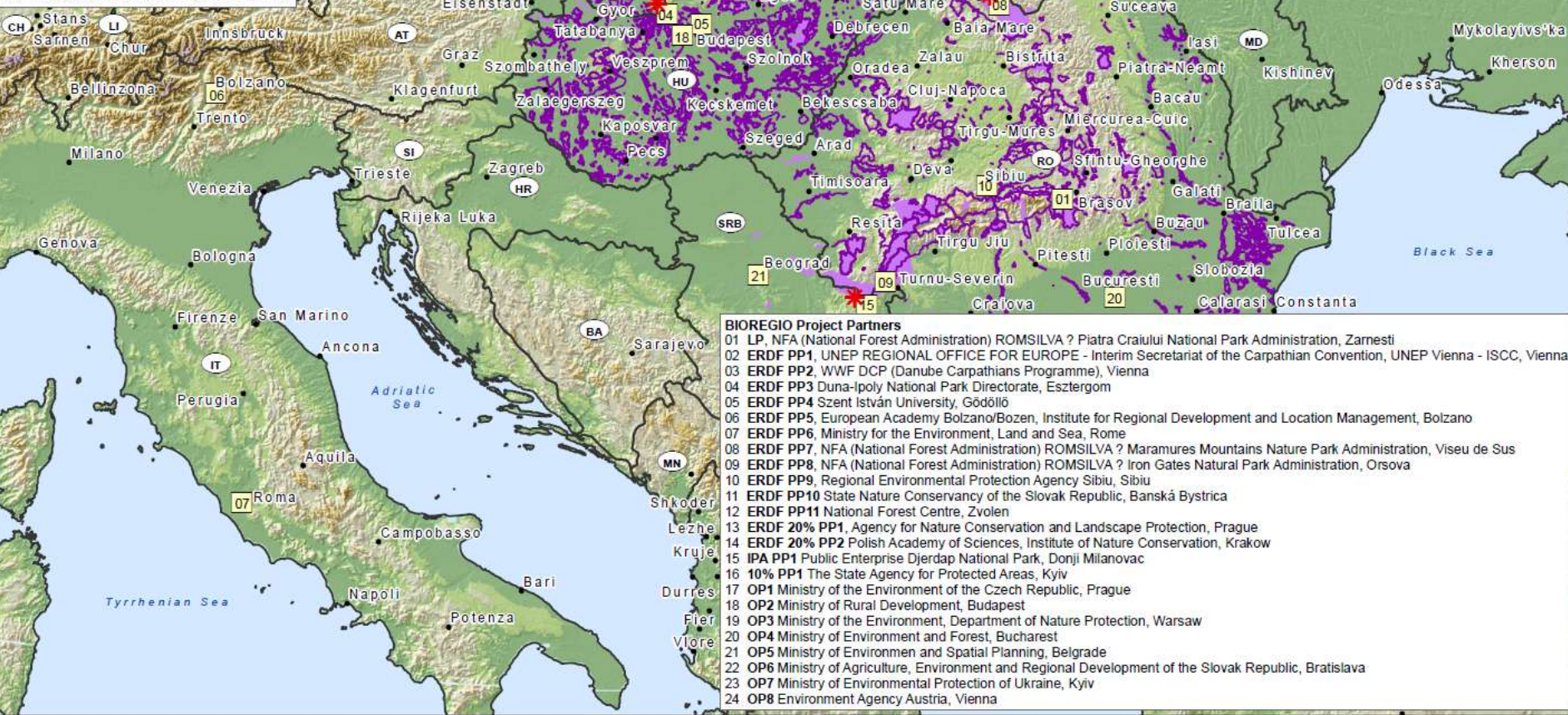


**BIOREGIO Carpathians**  
Project Partner Countries with their  
Protected Areas and NATURA 2000 sites



**EURAC**  
research  
Institute for Regional Development  
and Location Management  
Cartography: BÖHNISCH, J., July 2011

Source: EEA (2009); WDPA (2010)  
Administrative Boundaries: © EUROSTAT, ESRI



- BIOREGIO Project Partners**
- 01 LP, NFA (National Forest Administration) ROMSILVA ? Piatra Craiului National Park Administration, Zarnesti
  - 02 ERDF PP1, UNEP REGIONAL OFFICE FOR EUROPE - Interim Secretariat of the Carpathian Convention, UNEP Vienna - ISCC, Vienna
  - 03 ERDF PP2, WWF DCP (Danube Carpathians Programme), Vienna
  - 04 ERDF PP3 Duna-Ipoly National Park Directorate, Esztergom
  - 05 ERDF PP4 Szent István University, Gödöllő
  - 06 ERDF PP5, European Academy Bolzano/Bozen, Institute for Regional Development and Location Management, Bolzano
  - 07 ERDF PP6, Ministry for the Environment, Land and Sea, Rome
  - 08 ERDF PP7, MFA (National Forest Administration) ROMSILVA ? Maramures Mountains Nature Park Administration, Viseu de Sus
  - 09 ERDF PP8, NFA (National Forest Administration) ROMSILVA ? Iron Gates Natural Park Administration, Orsova
  - 10 ERDF PP9, Regional Environmental Protection Agency Sibiu, Sibiu
  - 11 ERDF PP10 State Nature Conservancy of the Slovak Republic, Banská Bystrica
  - 12 ERDF PP11 National Forest Centre, Zvolen
  - 13 ERDF 20% PP1, Agency for Nature Conservation and Landscape Protection, Prague
  - 14 ERDF 20% PP2 Polish Academy of Sciences, Institute of Nature Conservation, Krakow
  - 15 IPA PP1 Public Enterprise Djerdap National Park, Donji Milanovac
  - 16 10% PP1 The State Agency for Protected Areas, Kyiv
  - 17 OP1 Ministry of the Environment of the Czech Republic, Prague
  - 18 OP2 Ministry of Rural Development, Budapest
  - 19 OP3 Ministry of the Environment, Department of Nature Protection, Warsaw
  - 20 OP4 Ministry of Environment and Forest, Bucharest
  - 21 OP5 Ministry of Environment and Spatial Planning, Belgrade
  - 22 OP6 Ministry of Agriculture, Environment and Regional Development of the Slovak Republic, Bratislava
  - 23 OP7 Ministry of Environmental Protection of Ukraine, Kyiv
  - 24 OP8 Environment Agency Austria, Vienna

## Data management

2. Carpathian-wide harmonisation of collected data – WP4
3. Development a web-GIS – WP3/WP4
  - Content?
  - What is it for?
  - who should use it?
4. Recommendations: reducing barriers and bringing Natura 2000 network forward – WP2/WP7
5. Workshops with regional experts and stakeholders





**SOUTH EAST  
EUROPE**

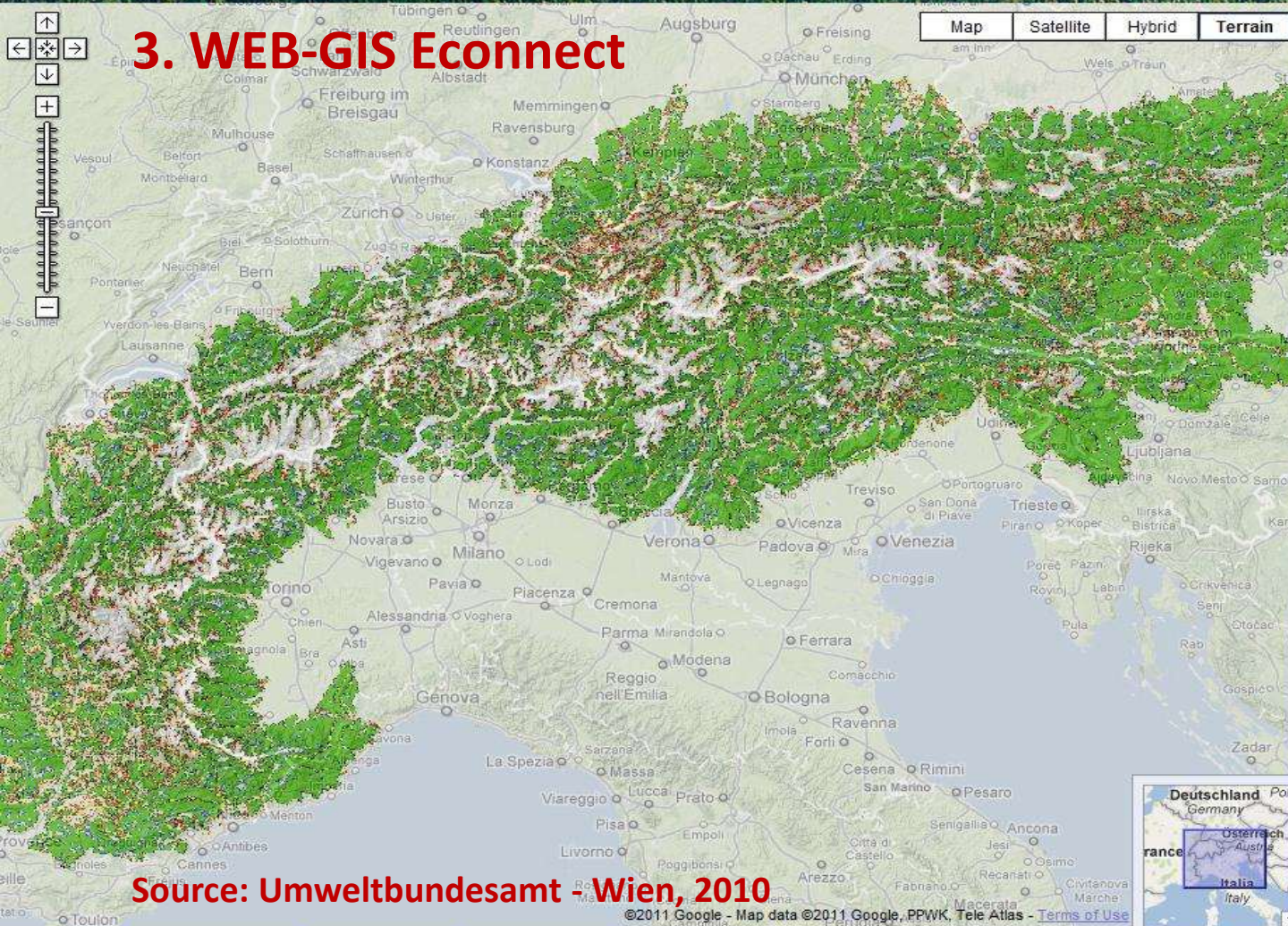
Transnational Cooperation Programme



# BIOREGIO Carpathians


[HOME](#)
[ABOUT  
THE PROJECT](#)
[PILOT  
REGIONS](#)
[WORK  
PACKAGES](#)
[PARTNERS  
& OBSERVERS](#)
[NEWS  
& EVENTS](#)
[DOWNLOAD  
AREA](#)
[LINKS](#)

## 3. WEB-GIS Econnect


[CSI](#)
[SMA](#)
[PAM](#)
[CARL](#)

**SMA Service (v.8)** [i](#)

**Legend**

- ☐ [Black grouse model](#) [i](#)
- ☐ [Black grouse GUIDOS](#) [i](#)
- ☐ [Brown bear model](#) [i](#)
- ☐ [Brown bear GUIDOS](#) [i](#)
- ☐ [Lynx model](#) [i](#)
- ☐ [Lynx GUIDOS](#) [i](#)
- ☐ [Griffon vulture model](#) [i](#)
- ☐ [Red deer habitat](#) [i](#)
- ☒ [Red deer GUIDOS](#) [i](#)
- ☐ [Wolf model](#) [i](#)
- ☐ [Wolf GUIDOS](#) [i](#)
- ☐ [Superspecies map of:](#)



☒ [Your uploaded KML-File !](#)



Activate function and display Indizes by clicking in the map

**Search**

Search a municipality inside a pilot region:

[Execute Find](#) [Clear](#)

Search pilot region:

[Execute Find](#)

Search Place or Address

[Go!](#)

**Source: Umweltbundesamt Wien, 2010**

©2011 Google - Map data ©2011 Google, PPWK, Tele Atlas - [Terms of Use](#)



[Impressum](#)





**SOUTH EAST  
EUROPE**

Transnational Cooperation Programme

# BIOREGIO Carpathians



Programme co-funded by the  
EUROPEAN UNION

## 3. Species data

### **Ursus arctos**

Group: mammals

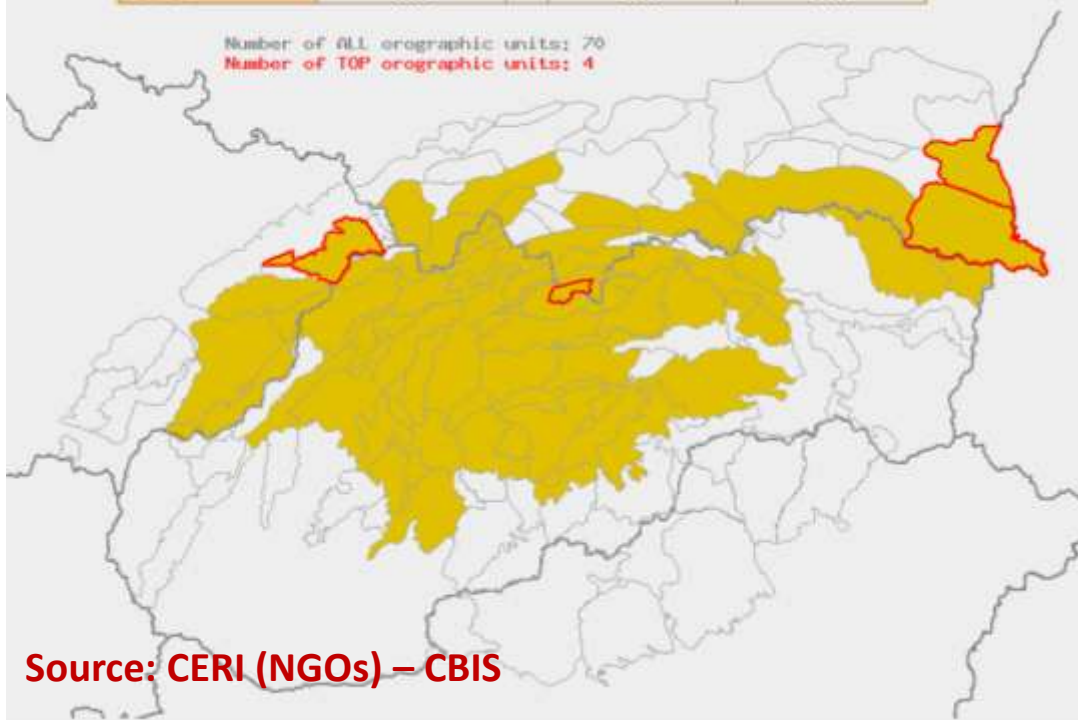
Natura 2000 animal species: yes priority

#### **Affinity to CORINE Land Cover units and altitude:**

Land Cover unit	Affinity to Land Cover units			
	CZ	HU	PL	SK
agricultural	0 - not important		0 - not important	1 - low
barren land	0 - not important		0 - not important	0 - not important
coniferous forests	3 - high		3 - high	3 - high
deciduous forests	3 - high		3 - high	3 - high
mixed forests	3 - high		3 - high	3 - high
succession areas	0 - not important		0 - not important	2 - medium
grasslands	0 - not important		0 - not important	1 - low
wetlands	0 - not important		0 - not important	0 - not important
water bodies	0 - not important		0 - not important	0 - not important
urban areas	0 - not important		0 - not important	0 - not important
Affinity to altitude				
minimal	400		300	700
maximal	1200		1600	1500

Number of ALL orographic units: 70

Number of TOP orographic units: 4



Source: CERI (NGOs) – CBIS



## 6. Legal barriers I

Challenges to be addressed:

- Identify legal barriers to ecological connectivity in the Carpathian countries
- Identify legal instruments supporting ecological connectivity in the Carpathian countries
- Provide recommendations for the elimination of those barriers and improve existing instruments

## Legal Barriers II

### Methodology:

- Build on already achieved results (i.e., Econnect experience)
- Develop a common grid/questionnaire on legislative provisions affecting ecological connectivity in the Carpathian countries
- Submit the questionnaire to selected national legal experts for national and transnational analysis
- Undertake a comparative legal analysis to identify limits and opportunities

## Next steps

- Surveying all relevant public data (EURAC) 30.09.2011
- Submission of Questionnaire (PR-Partners) 30.08.2011
- Resending the Questionnaire (PR-Partners) 30.09.2011
- WP Meeting Bolzano (EURAC / PR-Partners ) November 2011
- Submitting data (PR-Partners) 30.01.2012
- Data management/harmonisation (EURAC) September 2012
- Web-GIS (EURAC) December 2012
- Contacting national legal experts (EURAC) October 2011

## Contact information



Head of Institute  
thomas.streifeneder@eurac.edu  
T +39 0471 055 315



giacomo.luciani@eurac.edu  
T +43 1 260 60 5616



mariachiara.alberton@eurac.edu  
T +39 0471 055 232



kathrin.renner@eurac.edu  
T +39 0471 055 323



christian.hoffmann@eurac.edu  
T +39 0471 055 328



marianna.elmi@eurac.edu  
T +39 0471 055 425



julia.boehnisch@eurac.edu  
T +39 0471 055 329

Jointly for our common future

**Thank you very much  
for your attention!**